

20 fun things to do



on the Penistone Line





Welcome

to your guide to the Penistone Line,
which is bursting with tips and ideas
that will inspire you to use the train.

There is information for people who are not familiar with travelling by train to start exploring the railways and some information that might help more experienced travellers. This Guide has been produced by the Penistone Line Partnership, a community rail partnership that celebrated its 20th anniversary in 2013, so we have suggested 20 things to do within walking distance of stations along the line, one for each year that the partnership has been protecting, enhancing and promoting the line. See you on the train!

Buying your ticket

Depending on your journey, the train is often cheaper than catching the bus in this area. You can buy your ticket from Huddersfield, Barnsley and Sheffield Stations, from Quickfare machines or online. If your journey starts at a station where there is no staff, you can buy your ticket from the conductor on the train.

Concessions

- Under 5's travel FREE when accompanied by a paying passenger.
- 5 to 10 Year olds pay HALF FARE.
- 11 to 16 year olds pay HALF FARE when showing a Young Person's Photocard.
- The Penistone Line covers two Passenger Transport Executive (PTE) areas – West Yorkshire (Metro) and South Yorkshire. For pensioners, disabled people, registered blind, young people in full time education and jobseekers or people on low incomes, a pass is required. The schemes depend on which county you live in because the discounts and the area covered by the passes are different for the two PTE areas.

Up to date Information on passes and application forms can be found online at www.travelsouthyorkshire.com for South Yorkshire residents and at www.wymetro.com for West Yorkshire residents.

You can also get information and apply for a pass at Travel Centres at Huddersfield, Barnsley and Sheffield stations or at a Post Office.

On the Penistone Line, the border between the two counties is between Denby Dale (West Yorks) and Penistone (South Yorks).

There is also a National Disabled Person's Railcard scheme that gives a third off rail travel www.disabledpersons-railcard.co.uk



Timetable Tips

Timetables tell you how often the trains run and when the next train is due to arrive.

Timetables are written in 24-hour clock; 1200 is midday and 0000 is midnight.

The stations that the trains stop at are usually listed in order down the left side of the timetable. If there is not a time next to the station you wish to use, that means that the train does not stop there.

Timetables are issued twice a year in May and December.

Timetables are displayed at Stations and copies are free of charge from manned stations, Bus Stations, Travel Centres and information points around the community.

You can get information about trains on some station platforms at automated help points, which are easy to operate. Press the button on the point and you can speak to someone who will deal with your query.

There are also a number of smart phone apps, such as National Train Enquiries' that can provide train time and fare information and live train updates.

Timetables and travel updates are also available online at www.northernrail.org

When planning your journey allow plenty of time to board the train and be aware that train doors can close several minutes before departure.

For non-English speakers a LanguageLine translation facility is available at Travel Centres at Huddersfield, Barnsley and Sheffield.

Trains and Cycling

Bicycles can be taken on trains free of charge and no reservation is needed. Places are allocated on a first come first served basis. The number of cycles is restricted to two per train and the

conductor can refuse to take cycles aboard if it would make the train overcrowded or unsafe.

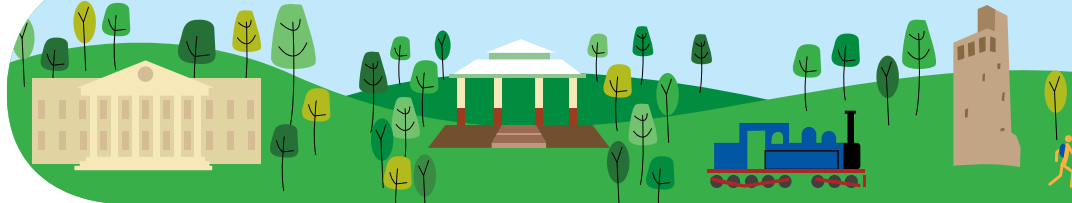
Covered, free to use, cycle parking is available at most stations but not Berry Brow, Honley and Brockholes. The cycle parking at Denby Dale and Chapeltown is unsheltered.



Access Requirements for Wheelchairs and People with Limited Mobility

The accessibility on the line varies greatly from station to station and we recommend that you make specific enquiries before your journey. There is also a pre-booking system for wheelchairs. Call 0808 156 1606 for assistance and information. Information on access and facilities is at stations on the line is available under "Station Information" at www.northernrail.org and www.nationalrail.co.uk has diagrams of station access and layout. All Northern Rail trains carry wheelchair ramps and have staff trained to use them and follow the "Guide Dogs Travel Charter".





1 Beaumont Park

Lockwood Station    

A short walk from the station, Beaumont Park is a Victorian gem. Opened in 1883 and now restored, it was Huddersfield's first public park. Over 21 acres the site has play areas, pond-dipping platforms, grottos, tree canopy walks, steep cliffs and breathtaking views. Visit www.fobp.co.uk for events and tea-room opening times.

2 Kirklees Light Railway

Shelley Terminus / Shepley Station    

An alternative route to KLR is via a scenic footpath to KLR's Shelley Terminus (approx. 1 mile). KLR's restored narrow gauge railway has steam and diesel engines, play areas, shop and tea rooms. Footpath map, timetables, prices and event information, including visits by Thomas the Tank Engine at www.kirkleeslightrailway.com

3 Music Trains

All Stations  

Music trains run throughout the year organised by Penistone Line Partnership volunteers. Buy a train ticket and join us aboard to enjoy a live band for no extra charge, with a selection of local brews on sale on the train. Times and information at www.penline.co.uk or musictrains@btinternet.com

4 Transpennine Trail

There are countless options for short strolls or day-long hikes on this coast-to-coast trail, designed with good surfaces and ramped access points. Join the trail at Penistone, Silkstone Common or Dodworth. The recently opened Kirkburton Spur connects to Stockmoor and Shepley stations. www.transpenninetrail.org.uk

5 Experience Barnsley

Barnsley Station    

New in 2013, this is the story of the town told through items donated by local people. Engaging and playfully displayed artefacts, galleries and changing exhibitions with a chance to learn about the history of the Penistone Line. Also a tourist information point and shop. www.experience-barnsley.com Tel 01226 773950

Huddersfield

Berry Brow

Brockholes

Shepley

Penistone

Lockwood

Honley

Stockmoor

Denby Dale



6 PLP Guided Walks

Various stations 

Organised by volunteers from the Penistone Line Partnership, you are invited to “take the train for a walk” on a train journey followed by a guided walk. A programme of free guided walks runs throughout the year from stations along the line and beyond with varying distances and terrains. More information at www.penline.co.uk

7 Shopping at Denby Dale

Denby Dale Station

Head down the hill from the station to an interesting range of independent retailers. From local and home-baked food to wool and exquisite textiles, boutiques, flowers and gifts to bargain outlets, the village shops and Springfield Mill are a delight, all in the shadow of the impressive viaduct. www.springfield-mills.co.uk www.denbydale-kirkburton.org.uk

8 Metrodome Bowling and Calypso Cove Waterpark

Barnsley Station

A highly rated leisure complex, often described a “hidden gem”, is on the doorstep of the station with ten pin bowling at Metrodome or splashes, slides and rides at Calypso Cove. www.calypsocovewaterpark.org.uk www.bpl.org.uk

9 Cinemas

Penistone, Barnsley, Sheffield Stations

If out of town multiplexes are not your cup of tea, these interesting, smaller, town centre cinemas are a hop, skip and a jump from stations. *Penistone Paramount* www.penistoneparamount.co.uk; *Barnsley Parkway 62-68 Eldon Street* www.barnsley.parkwaycinemas.co.uk; *Showroom Sheffield* www.showroomworkstation.org.uk

10 Castle Hill and Victoria Tower

Honley and Berry
Brow Stations



A steep but rewarding walk will take you to Huddersfield’s hilltop landmark. Castle Hill has been settled for at least 4000 years although the tower dates from more recent times, 1899. Check Kirklees Council website for tower opening times. A station-to-station walk at www.walkingabout.co.uk/castle-hill-walks-huddersfield/

Key guide



Toilet facilities



Suitable for prams



Baby change



Cafe



Activity free



Admission applies

Dodworth

Wombwell

Chapeltown

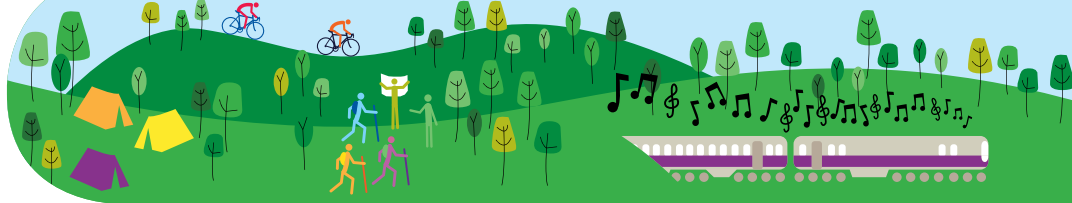
Sheffield

Silkstone Common

Barnsley

Elsecar

Meadowhall



11 Country Markets

Penistone Station    

A small but special Thursday market (10am-noon) to delight lovers of good food with baked goods, eggs, preserves, honey, meat on sale, plus crafts, Fairtrade goods and excellent locally grown plants. This is one of a network of co-operatives providing retail outlets for high quality, homemade, homegrown and hand crafted produce.

12 Elsecar Heritage Centre

Elsecar Station    

A short walk from the station, Earl Fitzwilliam's 18th century industrial village has a Newcomen beam engine, craft workshops and galleries plus a working steam railway. Shops and also collectors fairs and other events throughout the year. www.elsecar-heritage.com Tel: 01226 740203 (Note, there is not a full train service to Elsecar)

13 The Mighty Compton Organ

Penistone Station  

As well as a cinema and live venue, Penistone Paramount is home to this "shining example of entertainment from a bygone era". Leading organists perform regular concerts on the Art Deco feat of musical engineering in the elegant vintage auditorium. Also weekly lunchtime recitals. www.penistoneparamount.co.uk Tel 01226 767532

14 Bargains galore at Markets along the line

Huddersfield Mon, Tue (second-hand), Thu, Sat.

Penistone Thu, Farmers Market (every 2nd Sat in the month).

Barnsley Daily except Thu and Sun. Car boot Sun 7am to 1pm.

Wombwell Tue, Fri and Sat.

15 Silkstone Waggonway Trail

Silkstone Common Station    

The trail follows a horse-drawn waggonway built in 1809. Along the route you will discover a story of coal, canals, enterprise, fortune and disaster. Pot House Hamlet is a good place along the route to stop for a cuppa or an ice cream.

www.visitpenistone.co.uk/walks/silkstone_waggonway.html www.pothousehamlet.co.uk

Huddersfield

Berry Brow

Brockholes

Shepley

Penistone

Lockwood

Honley

Stocks Moor

Denby Dale



16 Peace Gardens & Winter Garden *Sheffield station*

These award-winning public spaces are an oasis in the buzz of the city. The fountains and sculptures of the Peace Gardens or the year-round warmth of the Winter Gardens are a great setting for an urban picnic.

www.sheffield.gov.uk

17 Penistone Cycle Hire *Penistone Station*

Cycle hire is a great chance to explore the countryside using pedal power. Penistone Cycle Hire offers family packages, children's bikes and trailers and is ideally located for exploring the Trans Pennine Trail. *Tel: 07549 647778/01226 761212*

visitpenistone.co.uk/see_and_do_sport/cycling.html

18 Festivals, Shows, Galas and Sporting Events

No need to sit in a traffic jam or worry about parking – the train will drop you at the heart of events like Huddersfield Festival of Light, Sheffield Doc Fest or a flat walk from Penistone Showground. A feast of events close to the line can be found at visitpenistone.co.uk www.kirklees.gov.uk/events www.welcometosheffield.co.uk

19 Volunteer with us

Our volunteers run music trains, lead walks, produce and distribute newsletters and update station notice-boards. They enhance platforms, raise funds and balance the books. If you have some time and skills to offer to our friendly group, please get in touch. *Tel 07912 753817* or penistoneline@gmail.com

20 Become a member and support our work!

Now in its 20th year, the Penistone Line Partnership is a voluntary community rail group working in partnership with Northern Rail, local authorities, rail users and local people. If you would like to support us in our work, you can become a member.

Tel 07912 753817 or penistoneline@gmail.com

Key guide



Toilet facilities



Suitable for prams



Baby change



Cafe



Activity free



Admission applies

Dodworth

Wombwell

Chapeltown

Sheffield

Silkstone Common

Barnsley

Elsecar

Meadowhall

About the Penistone Line Partnership

The Penistone Line Partnership is a voluntary organisation supporting and promoting community involvement along the Huddersfield to Sheffield railway line. The Penistone Line Partnership draws together train operator Northern Rail, Network Rail, local authorities and users to raise awareness of the railway in the local community, promote and market it more effectively, develop ideas and arrange funding for local improvements.

www.penline.co.uk

Useful Contacts

For non-English speakers a LanguageLine translation facility is available at Travel Centres at Huddersfield, Barnsley and Sheffield.

British Transport Police 0800 40 50 40 www.btp.police.uk

National Rail Enquiries 08457 48 49 50 www.nationalrail.co.uk

Northern Rail Customer Relations 0845 000 0125 www.northernrail.org

Northern Rail Assistance Helpline 0808 156 1606

Northern Rail Ticket Sales 0844 241 3454

Penistone Line Partnership Community Rail Officer 07912 753 817 penistoneline@gmail.com

Engineering work sometimes affects weekend services and passengers are advised to check with National Rail Enquiries before traveling.

Thanks to the volunteers from Penistone Children's Centre, Ark Tots Toddler Group and Friends of Beaumont Park walking group for their suggestions and input to this guide.

Copyright Penistone Line Partnership 2013

Illustration by www.tiger-tea.co.uk • Design by www.gb-creative.co.uk



Find us



Go to our website



@PenistoneLine

This booklet has been produced with the generous support of



The European Agricultural Fund
for Rural Development:
Europe investing in rural areas.

